

Annex A

ANNEX A - SoW/Bill of Quantities

Project: Construction Services at UNHCR IHP Camp

Location: Um Rakuba Camp, Doka Locality

The specified job are all provisional, including provision of materials and workmanship, providing water and electricity for the implementation and all other requirements to implement the job perfectly. The bidder must visit the site prior to submission of bid documents. The cost of this item should be included /imbedded in the other items.

Item	Item Description	Unit	Qty
Square-Shaped-Office Tukul - (6.5mx6.5m)			
1.1	Excavate for Strip foundation 50x50cm, as per drawings & specifications and cart away	ML	26
1.2	Provide materials and lay granular fill of approved type 50cm thick, well-watered and compacted	M ³	24
1.3	Provide materials and build foundation of 2 (two) brick wall in cement mortar 1:4, 80cm height, 30cm under ground level and 50cm above ground level as per specifications & drawings.	M ²	20.8
1.4	Provide materials and build one and half brick wall in cement mortar 1:6, 270cm total height as per specifications & drawings.	M ²	70.2
1.5	Provide materials and construct roof made of Ban woods not less than 10cm diameter used as rafters, Bamboo purlins each 20cm c/c both ways covered with grass (BOOS) Guttia Style as per drawings and specifications.	Job	1
1.6	Provide materials & lay reinforced concrete mix (1:2:4), 10cm thick for floor, reinforced with 10mm steel bar each 20cm c/c both ways as per specifications & drawings	M ³	4.2
1.7	Provide materials & apply internal and external plaster of cement mortar 1:6 for walls with clean and fine sand to give a total thickness of 20mm for walls, as per specifications & drawings	M ²	210.6
1.8	Supply materials & apply internal and external painting (waterproof), 3 coats of emulsion paint of approved brand and manufacture, including priming coat to give an even shade, thoroughly brushing the surface free from mortar.	M ²	210.6
1.9	Supply materials and fix white ceramic floor tiles 400x400mm with min. 8mm thickness. (First sorting) the joints are to be properly grouted grey cement slurry @ 3.3 kg per sqm including pointing in porcelain tiles mixed with pigment & curing. in cement mortar of proportion (1:3) to proper line including cutting to required size & shape & fixing at corners splays & chambers.	M ²	43
1.1	Provide materials, manufacture and fix painted finished steel metal door 220x120cm using 4x8cm rectangular and square sections & 3mm steel sheet, lock and color as directed by Engineer, including all accessories and hardware as approved.	No	1
1.11	Provide materials, manufacture, assemble & fix metal steel window 100 x 120cm Main frame from rec. steel pipe (4x8cm), Leaf from rec. steel pipe (3cmx6cm) filled with bended steel sheet 3mm thick complete with paint, external grills as directed by Engineer	No	4
1.12	Supply materials and fix 4 feet florescent light set with casing. The rate is including the wiring switches, conduits and all necessary accessories	No	2

1.13	Supply materials and install 15amp socket. The rate is including the wiring switches, conduits and all necessary accessories	No	2
1.14	Supply, install and connect 65" wall fan (orient). The rate is including the wiring switches, conduits and all necessary accessories	No	1
1.15	Supply, install and AC 6000 unit	No	1
1.16	Supply materials and fix main electrical board, with standard 2.5mm wiring and accessories as per workmanship	No	1
2: Pergola / Rakuba between the 2 Tukuls (5mx6.5)			
2.1	Excavate for Strip foundation 50x50cm, as per drawings & specifications and cart away	ML	10
2.2	Provide materials and lay granular fill of approved type 50cm thick well-watered and compacted.	M ³	17.25
2.3	Provide materials and build 2 (two) brick wall in cement mortar 1:6, 130cm total height, 30cm under ground level and 100cm above ground level as per specifications & drawings.	M ²	13
2.4	Provide materials and construct roof made of Ban woods not less than 10cm diameter used as columns, rafters, Bamboo purlins each 20cm c/c both ways covered with grass (BOOS) same as Guttia Style as per drawings and rules of workmanship	Job	1
2.5	Provide & lay reinforced concrete mix (1:2:4), 10 cm thick for floors reinforced with 10mm steel bar each 20cm c/c both ways as per specifications.	M ³	3.25
2.6	Provide & apply internal and external plaster of cement mortar 1:6 for partition walls with clean and fine sand to give a total thickness of 20mm for walls, as per specifications & drawings	M ²	30
2.7	Supply & apply internal and external painting (waterproof), 3 coats of emulsion paint of approved brand and manufacture, including priming coat to give an even shade, thoroughly brushing the surface free from mortar.	M ²	30
2.8	Supply and fix white ceramic floor tiles 400x400mm with min. 8mm thickness. (first sorting) the joints are to be properly grouted grey cement slurry @ 3.3 kg per sqm including pointing in porcelain tiles mixed with pigment & curing, in cement mortar of proportion (1:3) to proper line including cutting to required size & shape & fixing at corners splays & chambers	M ²	32.5
2.9	Supply and fix 4 feet florescent light set with casing. The rate is including the wiring switches, conduits and all necessary accessories	No	2
2.1	Supply and install 15amp socket. The rate is including the wiring switches, conduits and all necessary accessories	No	2
2.11	Supply, install and connect 65" ceiling fan (orient). The rate is including the wiring switches, conduits and all necessary accessories	No	1

3: Toilet Block

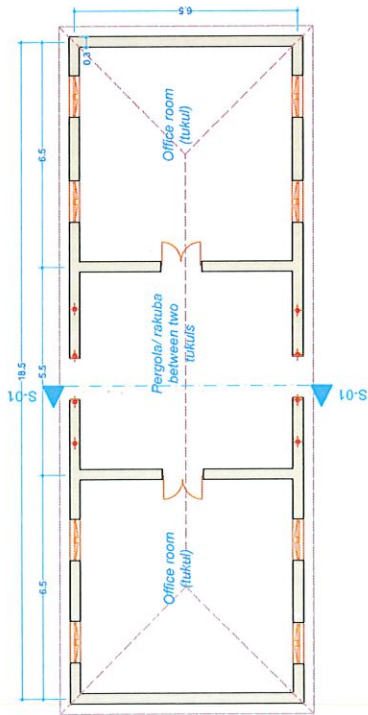
3.1-	Supply, build and finish a complete toilet block of 2 rooms (1.5m x 3m each) with front-protection wall 2m high and 3m length. Works include connections to the sanitation system using 4 inch PVC pipes for waste water and PPR pipes for clean water including connection from main water tank to a 2000 ltr plastic water tank on top of toilet building. Supply and fix 2 Western closet, 2 hand wash-basin and 2 shower set including all plumbing and finishing works as per the rules of workmanship and instructions of UNHCR Engineer. The toilet building is of strip stone foundation 40cm x 80cm with mortar 1:4, reinforced concrete grade beam 30cm x 30cm reinforced with 4 rebars 12mm, strip bars 6mm and concrete ratio of 1:2:4. The walls are of 1.5 fired bricks with mortar 1:4, plastered with C/S mortar 1:4 finished with internal and external paintings. The roofing slab is 15cm thick of reinforced concrete, ratio 1:2:4, rebars 12mm distributed each 15cm C/C. Floor finish is of compacted fill, PC and first class non slipery ceramic tiles as per rules of workmanship.	No	1
------	---	----	---

4: Sanitation System (Septic Tank)

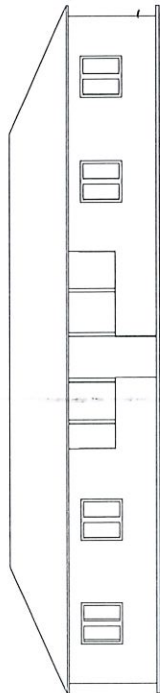
4.1-	Supply, construct and connect a complete sanitation system including construction of standard septic tank (for 30 persons), 6 manholes (60cm x 60cm), PVC piping 4 inch connected to the toilets with all plumbing works, fittings and finishing accessories as per drawings, rules of workmanship and direction of UNHCR engineer.	No	1
------	---	----	---

5: Soak Away Pit

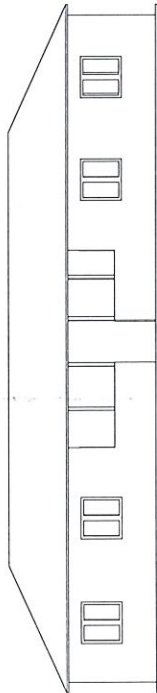
5.1	Supply materials, excavate and finish a soak-away pit 3m x 3m x 3m filled with approved water-soaking-stones or fired bricks. The top 50cm of the pit is built of 2-bricks wall 40cm width with cement mortar 1:4. The pot of the pit is sealed with appropriate plastic sheets and covered with movable reinforced concrete slabs with ratio 1:2:4 and rebars of 12mm, 15cm C/C. All works are as per direction of the Engineer.	No	1
-----	---	----	---



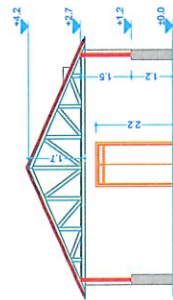
Tukuls and rakuba - floor plan



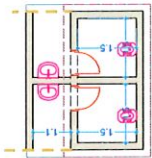
Tukuls and rakuba - Elevation 1



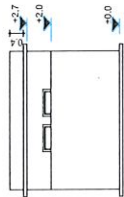
Tukuls and rakuba - Elevation 2



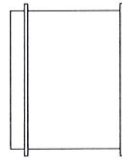
Tukuls and rakuba - Section S-01



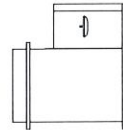
Toilet block - floor plan



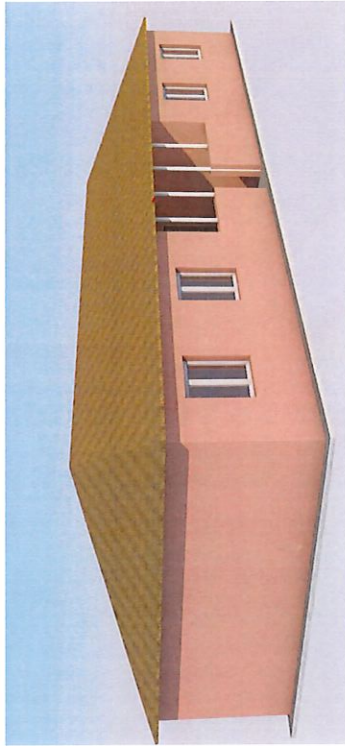
Toilet block - Elevation 1



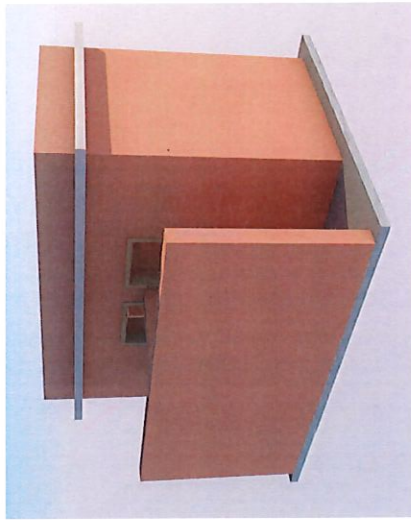
Toilet block - Elevation 2



Toilet block - Elevation 3



Tukuls and rakuba - Perspective



Toilet block - Perspective



UNHCR GEDAREF SUB - OFFICE

Office tukuls, rakuba and toilet block in Um Rakuba

Drawn by: UNHCR Technical Unit – Gedaref

Date: October 2022

Scale: 1:100 (A2)

Drawing Status

#Status